

Alexander LAN

Windows Quick Start Guide (Local System Management)

This software is to be installed on the systems that you wish to be managed.

Requirements:

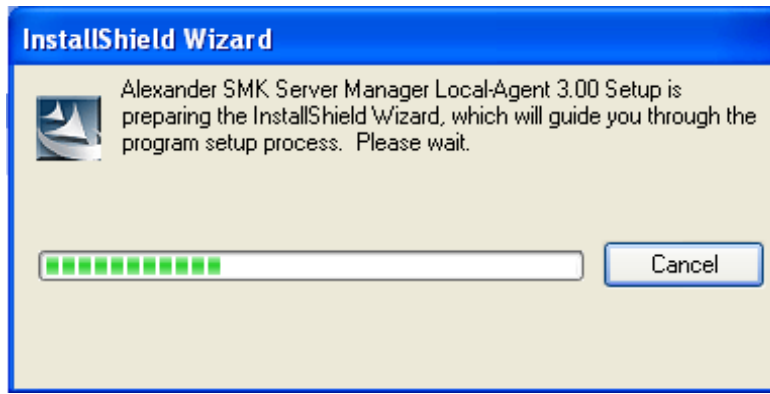
- a) x86/x64 computer running a compatible operating system
- b) A valid operating TCP/IP Network Adapter
- c) The system must have a password for the Administrator account

<i>Operating system compatibility</i>	<i>Server Manager Local</i>	<i>Desktop Manager Local</i>	<i>Notebook Manager Local</i>
Windows 2003 Server	■		
Windows 2000 Server (SP3 or above)	■		
Windows XP Professional	■	■	■
Windows 2000 Professional (SP3 or above)	■	■	■

The Alexander LAN Local System Management Software is a complete package, you will not be required to install any prerequisite software.

Please remove any other hardware monitoring utilities that you have installed on your system, as these may conflict with retrieving environmental data from your hardware.

1. Download the Software to the system you wish to install it on. Extract the zipped files to a directory on the system, go to that directory and run the executable installation program.
2. Choose the language for the user interface and follow the installation instructions



- a) Choose **Local** to install the Alexander LAN web server and agent, which enables you to manage the system directly via a web browser. You may also manage the system via the system running the Central System Management software. **Once installed proceed to step 3.**
 - b) Choose **Agent** if you do not wish to install the Alexander LAN web server. In this case the system is only going to be managed via the system running the Central System Management software. **Once installed you are finished, proceed to configure the system via the system running Central System Management software.**
3. Open up your web browser and enter the IP address or machine name of the system that you wish to configure followed by :3930 which is the Alexander LAN port number



Remember to specify https if you selected SSL

4. Enter a valid Administrator level account user name and password for the system you are browsing to, or you can enter a Domain Administrator user name and password if the system is in a Windows Domain

Username:

Password:

Domain:

5. Click on the Alert Matrix icon



6. Enter the email details on where you wish to be notified about any operational issues the software identifies

Notification Settings

Email Address

SMS/Pager Address

Network Message Machine Name

SMC System

Username

Sender's Email Address

Sender's Email Password

Mail Server

SNMP Trap Receiver

You're done, the software will now continually monitor the system resources and alert you via email to any identified issue.

Remember you can access the Local System Management user interface (if you installed the web server) from anywhere across the network, all you need is a web browser.