

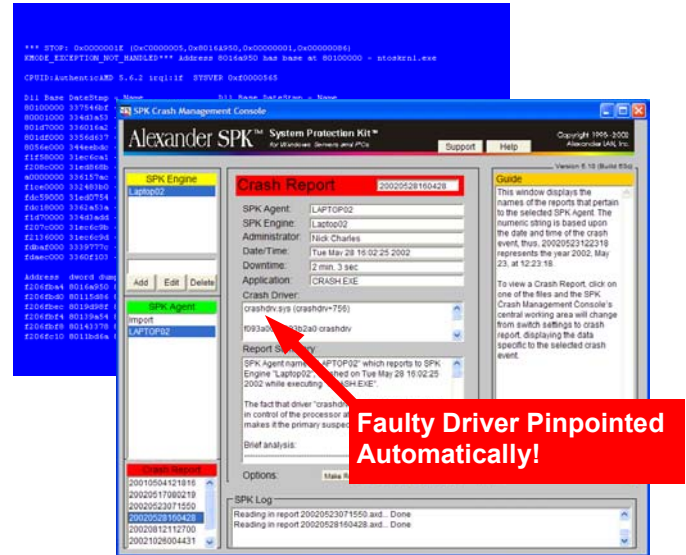
Analyze Windows Crashes in Seconds Automatically...

When your Windows 2000/XP/S2003 systems crash (Blue Screen), the Alexander SPK (System Protection Kit) immediately recovers them and reports the cause. It accomplishes this by automatically analyzing memory dump data. The SPK then connects with Microsoft.com through a special portal, matches up precise system data from thousands of variants, then builds an SPK Crash Report that pinpoints the cause.

Upon installation, the SPK can even locate historical data that can be processed, giving a history of what caused crashes up to that point. From then on, all crashes will be fully managed for you by the SPK, taking what often means weeks of frustration, and solving the cause in minutes...automatically.

With the faulty driver known, it is typically a simple matter of getting an update from the vendor. In cases where the vendor has no solution, the SPK will send a detailed report, complete with engineering data that simplifies their ability to solve the problem for you.

All in all, the SPK will help you make the most of system uptime.



Easy to read interfaces replace cryptic screens

Alexander SPK

Single PC Edition \$39
Automatically analyze the cause of your PC's crashes

Small Office Edition \$99
Crash Diagnostics for 1 Server and up to 50 PCs

Enterprise Edition \$499
Centrally resolve crash events throughout your enterprise

Consultants Edition \$499
Solve your client's problems without leaving your office

PC Magazine declared the SPK an **Essential App** in their "Windows Survival Guide"

Eliminate weeks of frustration from Blue Screen crashes. Let the Alexander SPK Single PC Edition manage your PC when things are at their worst. It will ensure that your PC will restart after a crash and report the cause in a simple report. Also, upon installation it will search for historical minidump files. If it finds some, it will process them and report what caused crashes up to that date.

Simplify Windows system crash management for small offices and home offices with the Alexander SPK Small Office Edition. It includes an agent for one server and one PC. Additional PC agents can be purchased for \$20 each enabling up to 50 PCs to be monitored (the Small Office Edition is limited to 1 Server).

Resolve crash problems in minutes from your desktop PC, no matter where the in the world the crash occurred. Using the SPK Crash Management Console, you can read a crash report or change the crash management switch settings for any server or PC anywhere your network, even through the Internet. Grow the coverage of your crash management by adding agents for both servers and PCs, at \$149 and \$20 each, respectively. Management is further simplified by the option of organizing servers and PCs into groups sorted by systems, departments, location, or whatever you designate. SNMP traps and email alerts can be sent to one or many administrators when crashes occur, as well as when a report is ready to be viewed.

Diagnose crash problems for servers and PCs that are out "in the field" while you are at your own desk. Just have the SPK Consultants Edition create Agents that you can through the Internet. The Agents can be used for up to 30 days on your customers' unstable PCs and servers. When any crash, you will be notified and the cause will be reported to you without the customer having to do anything.

Alexander LAN, Inc.
100 Perimeter Road
Nashua, New Hampshire
03063 USA



www.alexander.com
sales@alexander.com
Tel: (603) 880-8800
Fax: (603) 880-8881